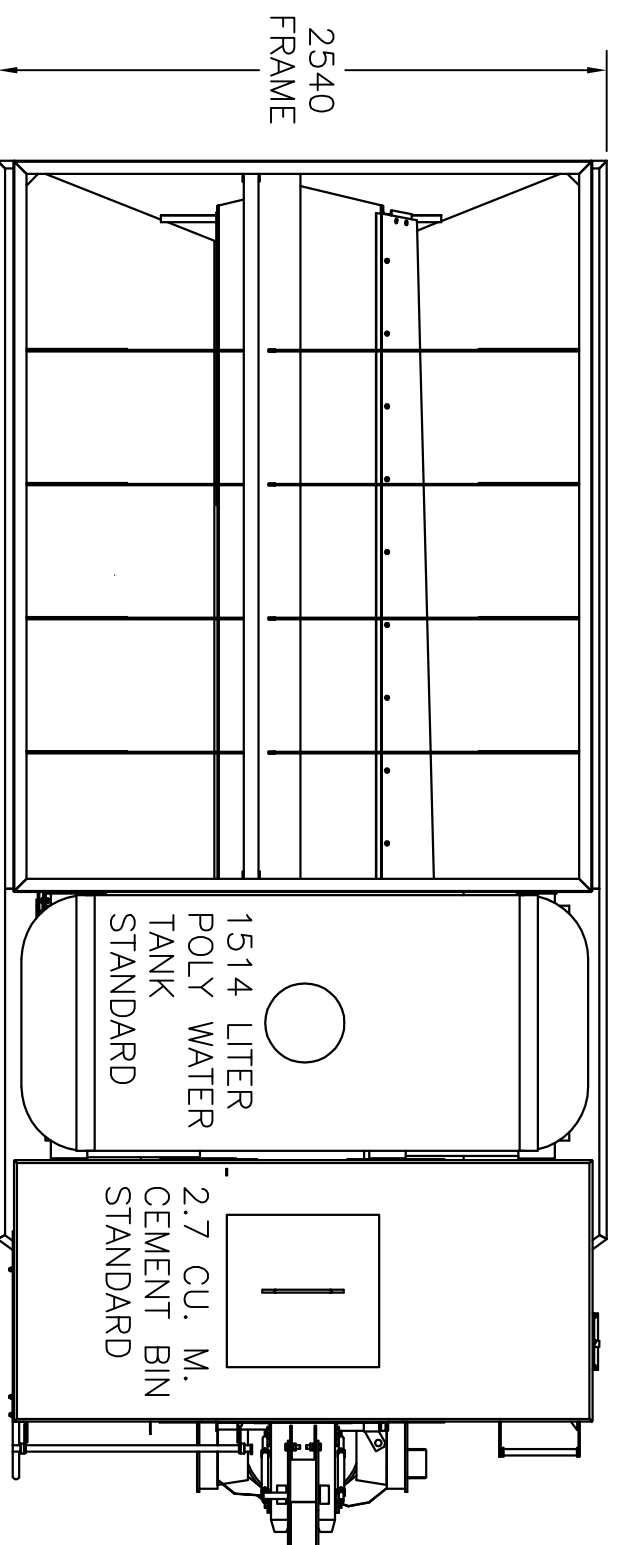


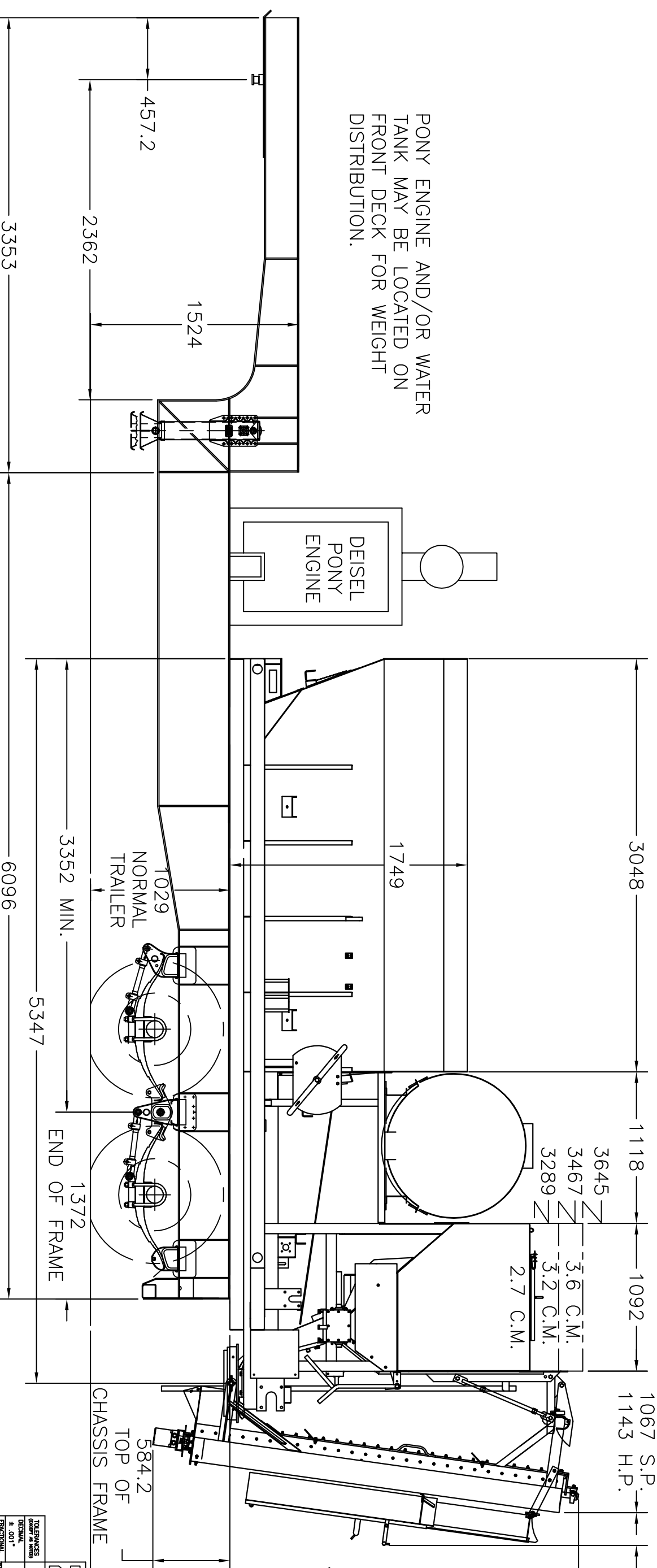
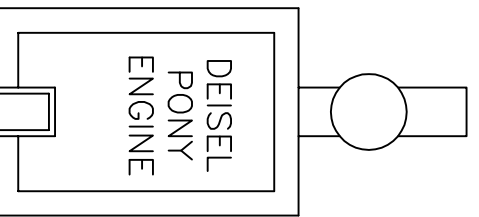
STONE BIN VOLUME
4.3 CU. M.
53%
TOTAL BIN VOLUME
8.0 CU. M.
SAND BIN VOLUME
3.7 CU. M.
47%



407 MIXER SHOWN, USE 408
THRU 409 DRAWINGS TO
REFERENCE MODEL REQUIRED
BIN HEIGHTS AND VOLUMES

MANUAL CHUTES
=241.3
S.P. PWR CHTS
=431.8
H.P. PWR CHTS
=355.6
S.P. SWL CHTS
=254
H.P. SWL CHTS
=330.2

PONY ENGINE AND/OR WATER
TANK MAY BE LOCATED ON
FRONT DECK FOR WEIGHT
DISTRIBUTION.



CHASSIS FRAME

VMMB BIN VOLUME
7.6 CU. M.

The information contained in this drawing is the sole property of
Zimmerman Industries. Any production in part or whole without
written permission of Zimmerman Industries is prohibited.

TOLERANCES DIMENSION	± .001"
FRACTIONAL	± 1/32"
DECIMAL	± .001"
DRAWN BY: TMH	SCALE: 1/16" = 1"
CHECK BY:	DATE: 13 MAY 04
ZIMMERMAN INDUSTRIES INC. EPHRATA, PA. - 717-733-8188	
407 -409 MEDIUM TRAILER	
6.0 CU. M. CONFIGURATION	
DRAWING NO.:	407N1-M