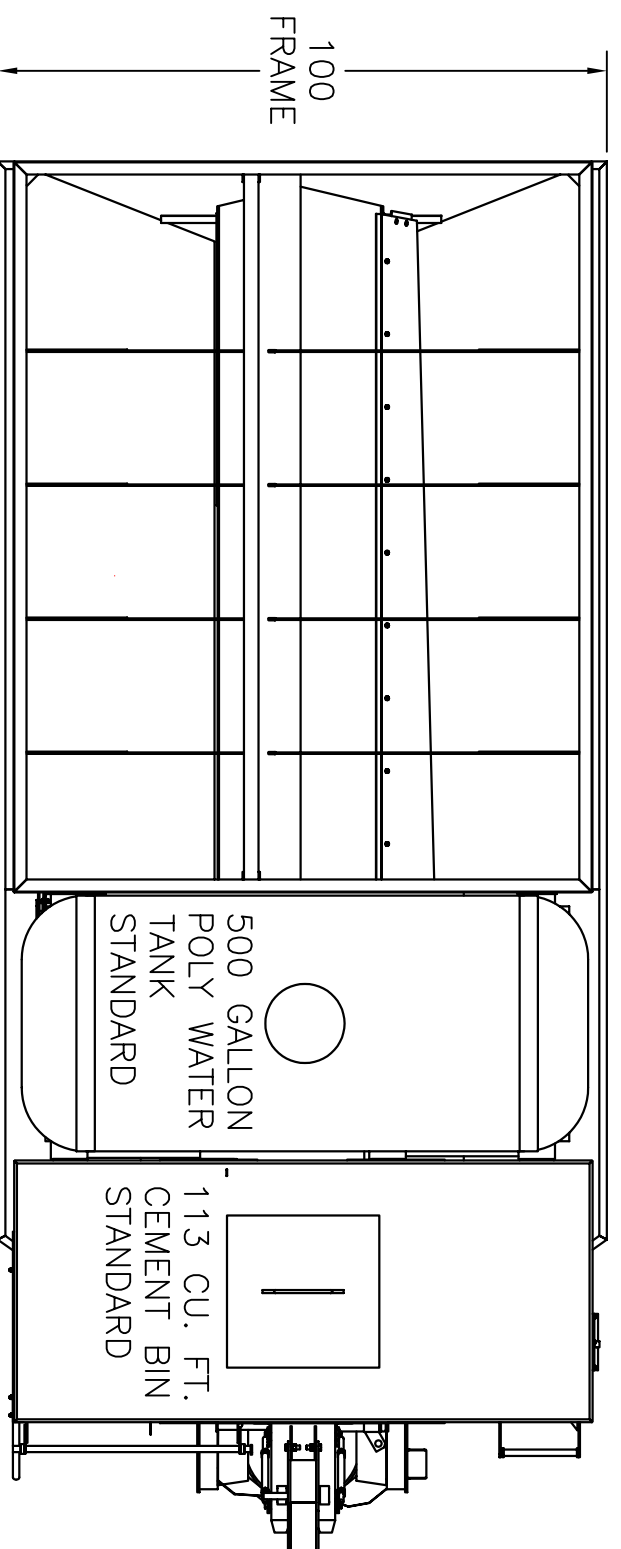


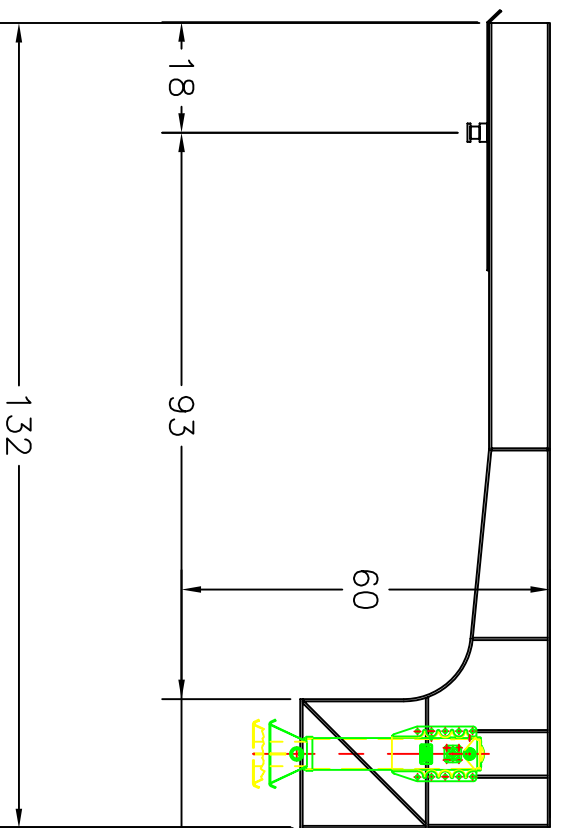
STONE BIN VOLUME  
214 CU. FT.  
55%  
TOTAL BIN VOLUME  
390 CU. FT.  
SAND BIN VOLUME  
176 CU. FT.  
45%



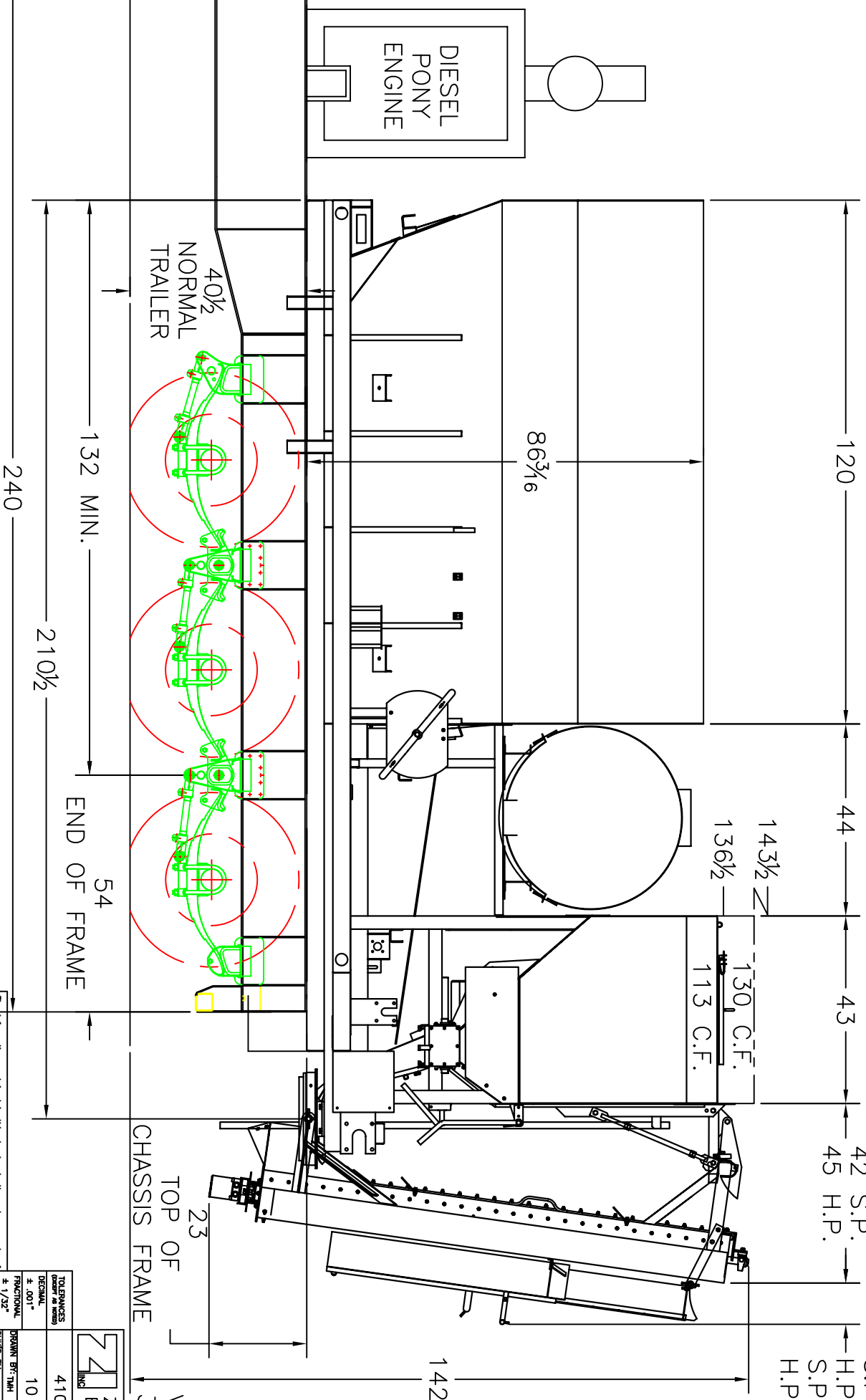
410 MIXER SHOWN, USE 411  
DRAWINGS TO REFERENCE  
MODEL REQUIRED BIN HEIGHTS  
AND VOLUMES

MANUAL CHUTES = 9½  
S.P. PWR CHTS = 17  
H.P. PWR CHTS = 14  
S.P. SWL CHTS = 10  
H.P. SWL CHTS = 13

PONY ENGINE AND/OR WATER TANK  
MAY BE LOCATED ON FRONT DECK  
FOR WEIGHT DISTRIBUTION.



DIESEL  
PONY  
ENGINE



40½%  
NORMAL  
TRAILER

VMMB BIN VOLUME  
377 CU. FT.

23  
TOP OF  
CHASSIS FRAME

TOLERANCES  
UNLESS  
OTHERWISE  
SPECIFIED  
FINISHES  
AS SHOWN  
DRAWN BY: TMM  
SCALE: 1/16" = 1'  
DATE: 13 MAY 04  
DRAWING NO.: 410N1

ZIMMERMAN INDUSTRIES INC.  
EPHRATA, PA. - 717-353-6188  
410-411 HEAVY TRAILER  
10 YARD CONFIGURATION

The information contained in this drawing is the sole property of Zimmerman Industries. Any production in part or whole without written permission of Zimmerman Industries is prohibited.